

# ESE

**ENERGY**



ESE Energy (Consulting Engineers) 2014



## **About us**

ESE's core business is to provide customers with design engineering solutions. ESE's business keywords are safety, environment protection, high quality and engineered reliability. ESE's in-house engineers, dedicated skills and most importantly team effort emphasizing safety and green designs set the pace for its future in building green sustainable environments for people to live and work happily.



# Allen Teh Pooi Kuang



## Current Position

Technical Director

## Qualifications

M.Eng. (Hons) Mfg Management, University of South Australia, Australia

B.Eng. (Hons) Civil Eng, University of Leeds, UK

## Professional Associations

ASEAN Eng, Asean Federation of Engineering Organization (AFEO)

P.Eng, Professional Engineer, Board of Engineers, Malaysia (BEM)

## Committees

Investigator, ACEM-IEM Panel of Engineering Experts for ACEM / IEM

Member AFEO, BEM, IEM, ICE (UK)

## Publications

"Construction Industry & Design Codes for Concrete Structures in Malaysia", published 1997 in HAKI C&S Conference, Jakarta, Indonesia

"Concrete Codes of Practice in Malaysia after 2006", speaker 2001 at Monash University, Malaysia

"Application of EPDM Geo-membrane Liners for Water and Environmental Containment", published 2006 in IEM journal

"Sustainable Green Walls Design and Installation in Malaysia", publishing in 2011.

## Professional CIVIL & STRUCTURAL Engineer(BEM Reg : 9146)

### Key Data

Allen Teh (44 yrs) has overall 22 years of experience with the initial 10 years of his career, working in engineering projects locally and internationally in Australia, United Kingdom, Thailand, Myanmar and Philippines. His engineering expertise comprise of construction management and design of buildings and infrastructures. The following 10 years of Allen's career has been involved mainly in management and leadership of local engineering contracting company.

## Relevant Career Path

### Principal, ESE Energy

Design Consultancy

### Director, ESE Engineering Sdn Bhd

Lead management of engineering company and overseeing the projects, operations and investments in Malaysia.

### Lead Engineer, Pfizer Laboratories, England, UK

Managing construction and design of the facility for Ove Arup in Sandwich.

### Project Engineer, Manjung Power Station, Malaysia

Project management and design coordination for Alstom in Lumut.

### Project Engineer, Malampaya CGS Gas Production Platform, Philippines

Platform design engineer for Arup Energy in Subic.

### Project Manager, Pagbilao Power Station, Philippines

Construction engineering and management of infrastructure for Southern Energy in Quezon.

### General Manager, Bolton Bhd, Myanmar

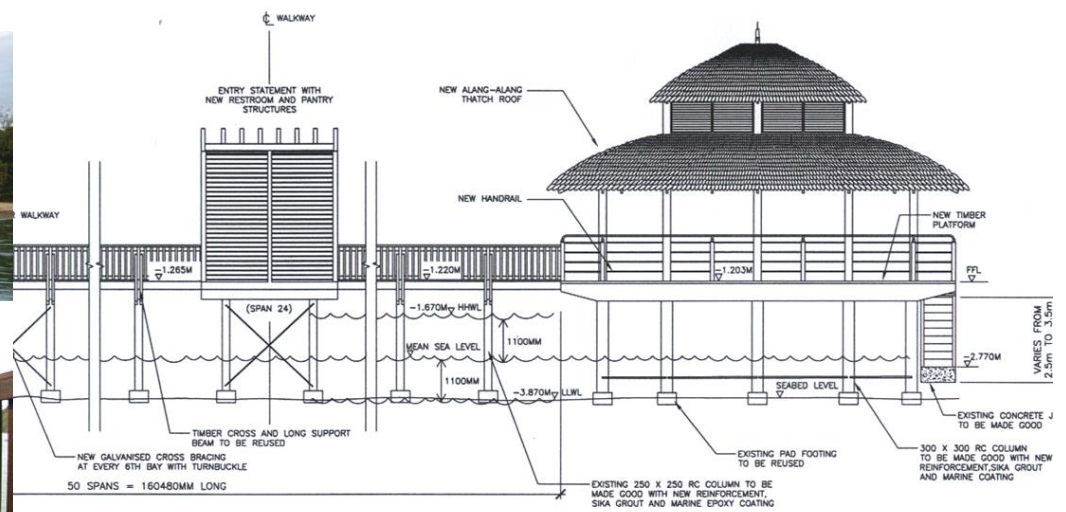
Lead management overseeing property development and overseas investments for Pale Development.

### Project Manager, CCG Power Station, Thailand

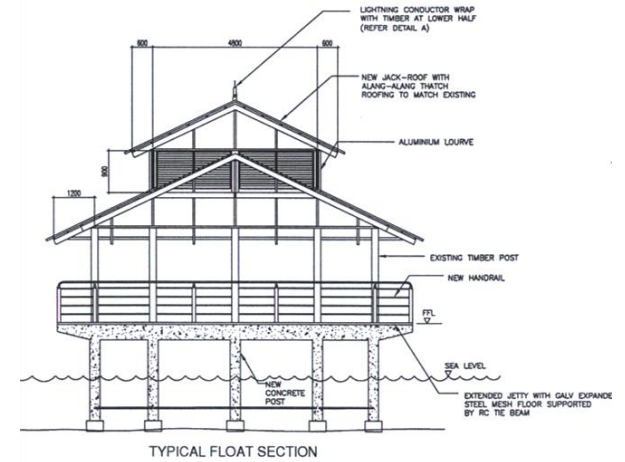
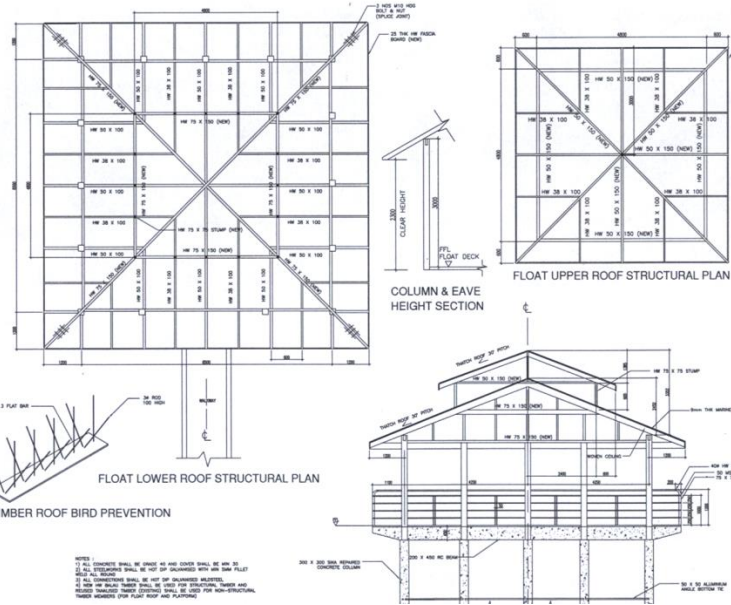
Design management for ABB Thailand based in Rayong.

### Engineer, Wandoo CGS Alliance, Australia

Design engineer for Wandoo offshore oil production platform CGS in Perth, Western Australia.

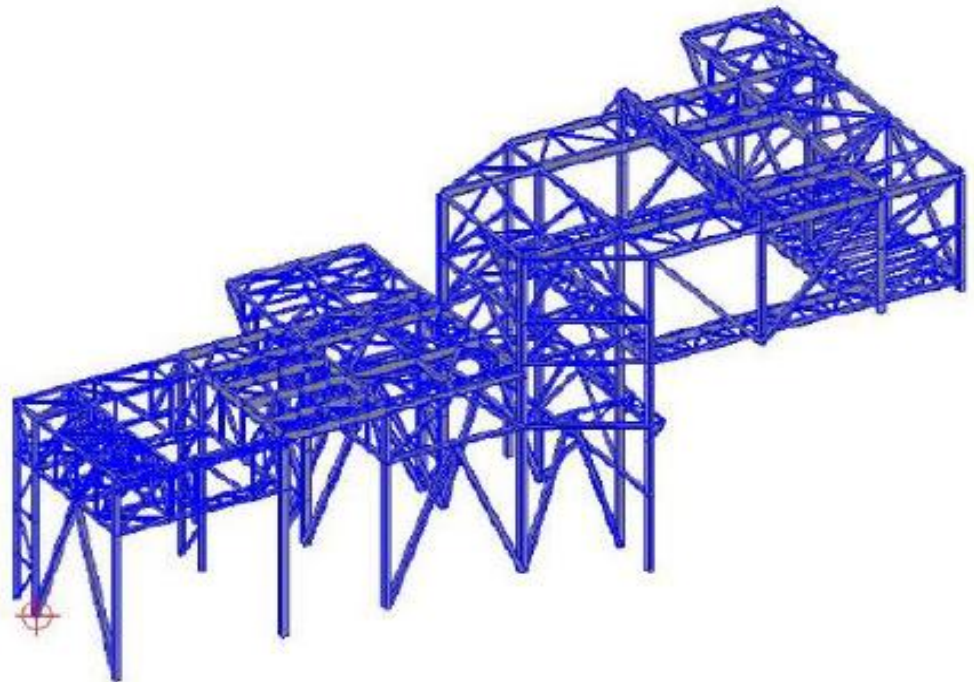
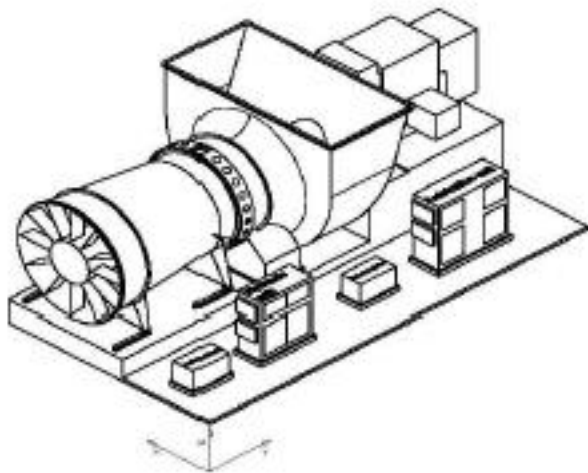
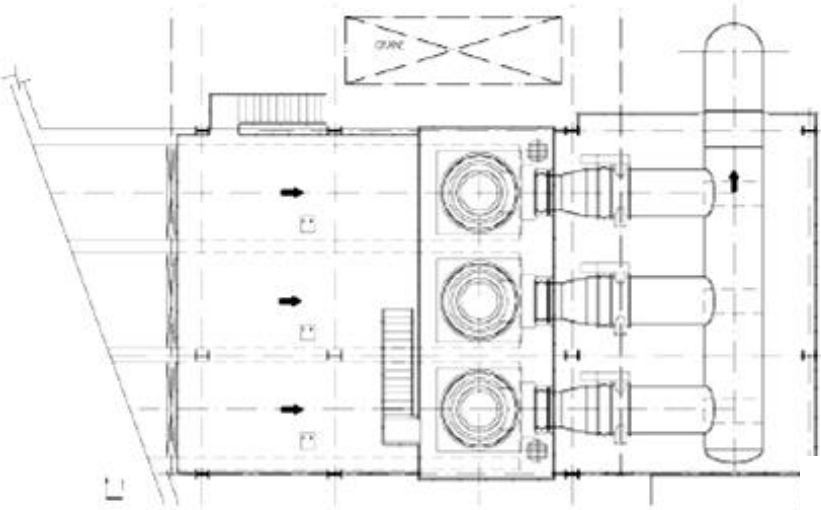


TYPICAL WALKWAY AND FLOAT ELEVATION

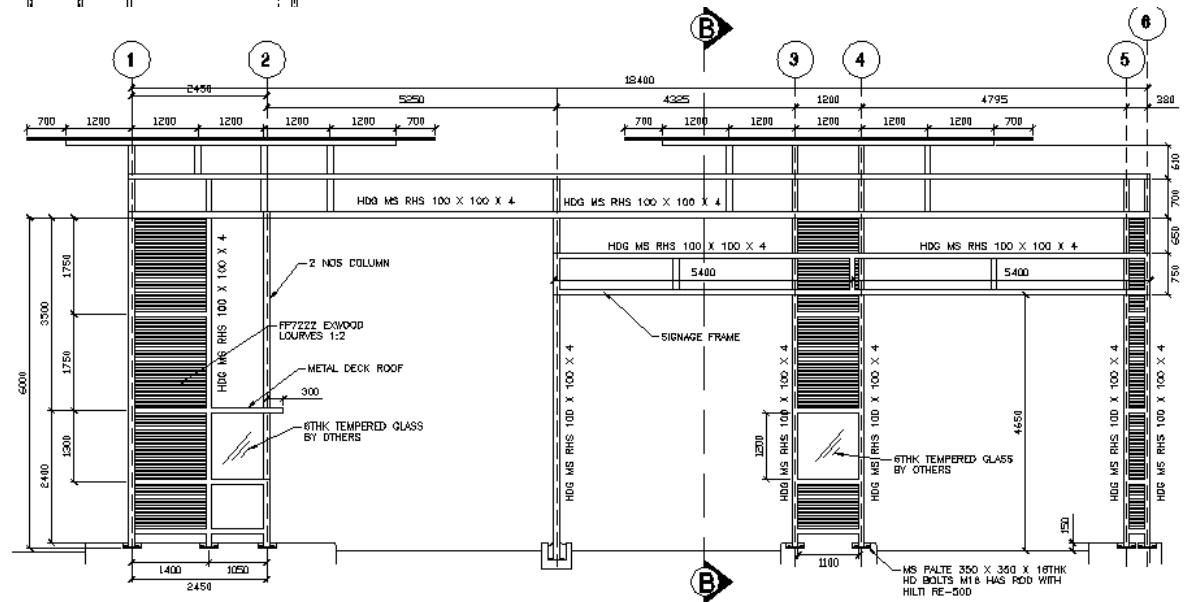
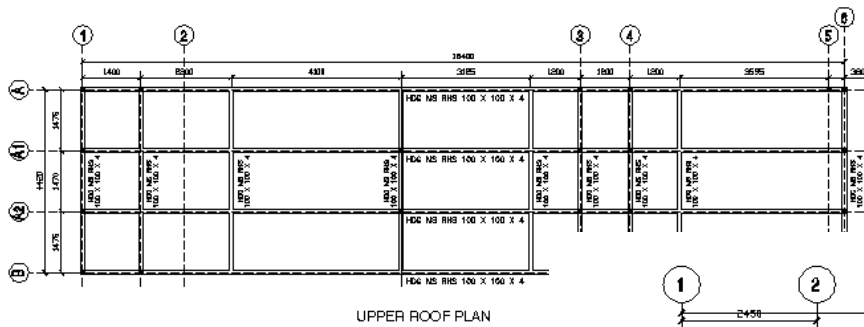
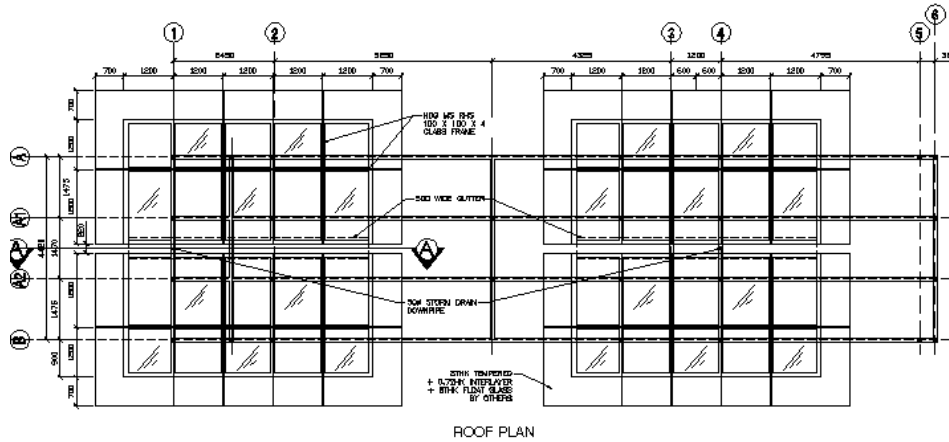


TYPICAL FLOAT SECTION

# OFFSHORE JETTY - WESTIN HOTEL, LANGKAWI

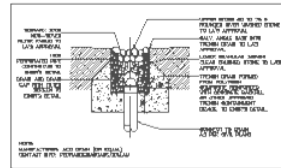
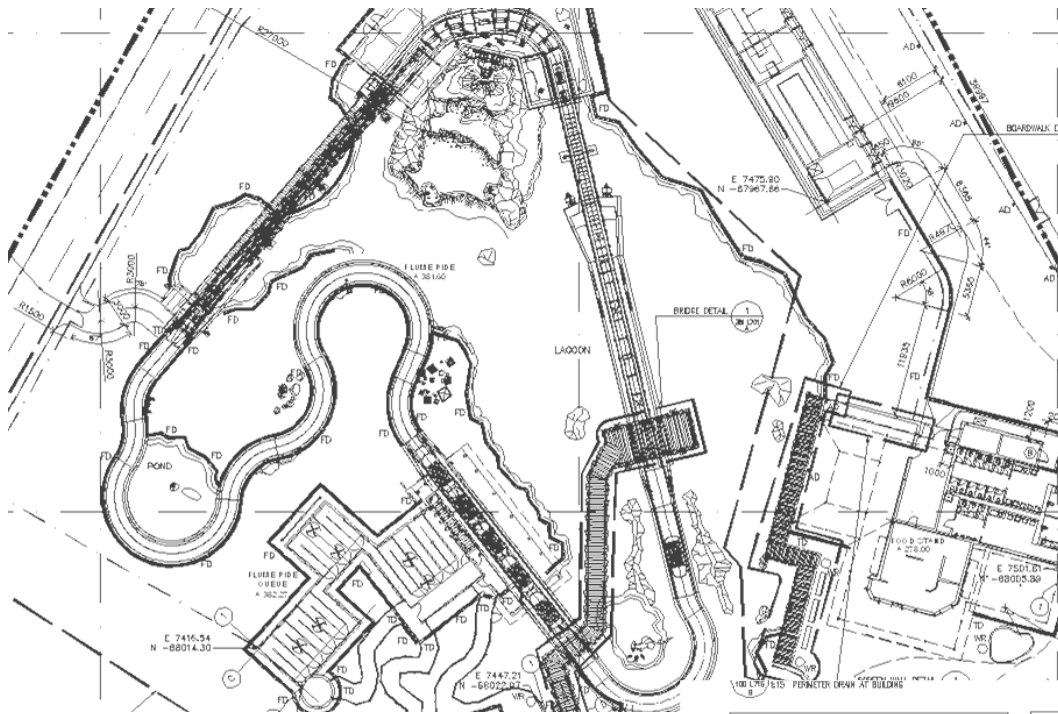


# CIVIL & STRUCTURE - TANJUNG BIN POWER PLANT

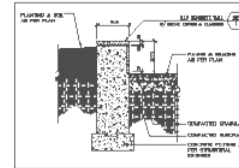


# MAIN ENTRANCE ARCH - AL-BUKHARY INTERNATIONAL UNIVERSITY, ALOR SETAR

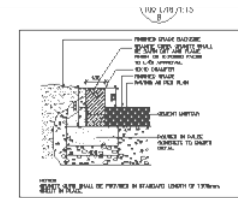




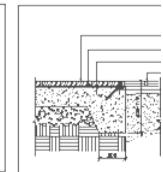
9 TYP FRENCH DRAIN DETAIL  
100 L716 7:15



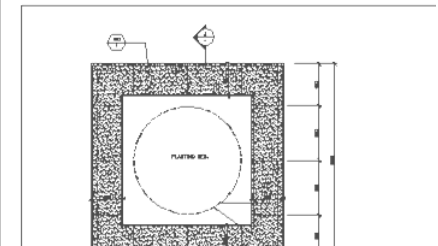
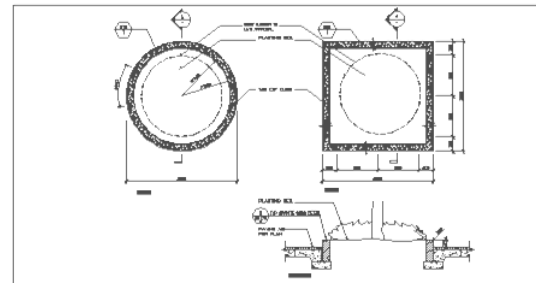
8 TYP SEATWALL DETAIL  
100 L716 7:30



6 TYP GRANITE CURB DETAIL  
100 L716 7:15



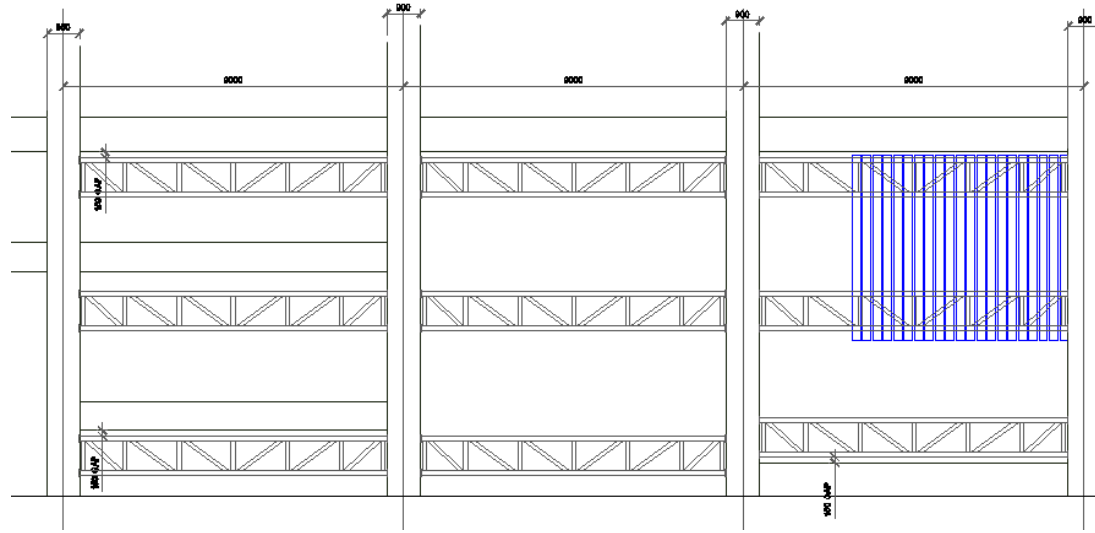
3 TYP TREE GRATE COLLAR  
100 L716 7:15



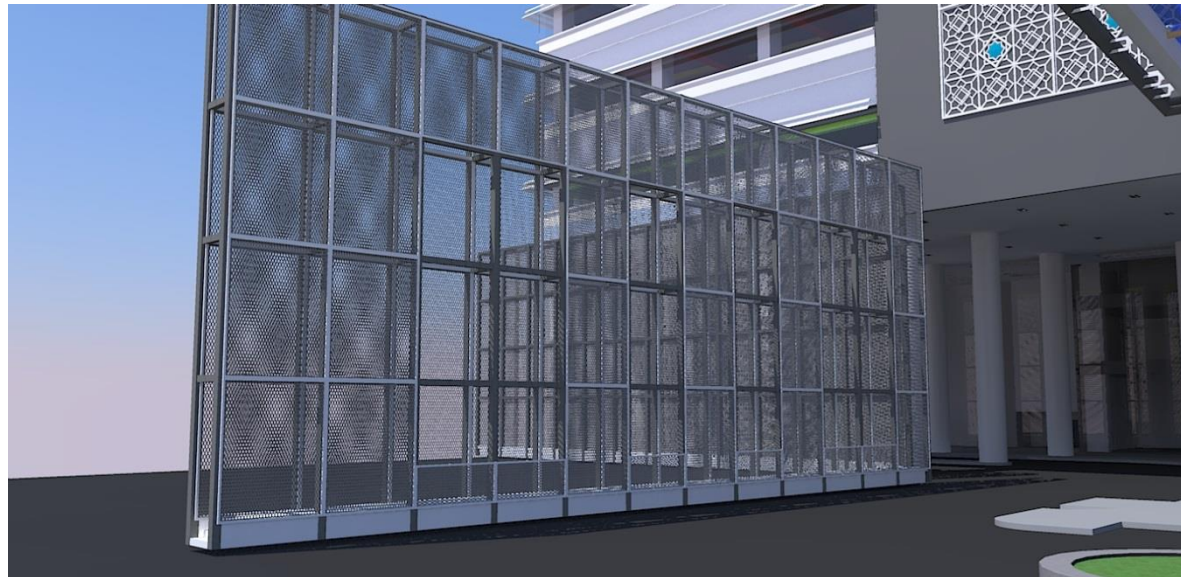
# EPDM LINING - LEGOLAND, KOTA ISKANDAR







## **CIMB BANK KL SENTRAL - STRUCTURAL TRUSS SYSTEM**



## **BANK RAKYAT KL SENTRAL - VERTICAL SCREEN STRUCTURE**

**ESE**  
ENERGY



**ESE ENERGY**

**B-3A-5, SETIAWALK, PERSIARAN WAWASAN,  
PUSAT BANDAR PUCHONG,  
47160 PUCHONG, SELANOGOR.**

**TEL : 03-5885 3180**

**FAX : 03-5885 3181**

**EMAIL : [Allen.Teh@ese.my](mailto:Allen.Teh@ese.my)**